

Product Brochure For G162

Industrial Bench Grinder - BG-10

Ø250mm Fine & Coarse Wheels
1kW - 1.3HP Motor Power



On Sale

| | |
|-----------------|-------------------|
| Ex GST | Inc GST |
| \$940.00 | \$1,081.00 |
| \$780.00 | \$897.00 |

| | |
|--|-------------------|
| ORDER CODE: | G162 |
| MODEL: | BG-10 |
| Grinder Type (Bench / Pe): | Bench |
| Brand: | Hafco MetalMaster |
| Grinding Wheel Diameter (mm): | 250 |
| Grinding Wheel Width (mm): | 38 |
| Wheel Grade (Type): | Fine & Coarse |
| Linishing Attachment (mm): | Optional |
| Disc Size (mm): | ~ |
| Spindle Shaft Thread Size (mm / Inch): | 1" x 8TPI |
| Includes: | ~ |
| Motor Power (kW / hp): | 1 / 1.3 |
| Voltage / Amperage (V / amp): | 240 / 10 |
| Motor Speed (rpm): | ~ |
| Machine Dimensions (L x W x H) (mm): | ~ |
| Nett Weight (kg): | 49 |



Description

The Hafco Metalmaster BG-10 Bench Grinder, manufactured in Taiwan, is a robust and reliable machine designed for industrial use. With a heavy cast iron frame, a powerful 1.3HP motor, and 250mm grinding wheels, this bench grinder is built to handle the most demanding tasks. Additionally, it features heavy-duty toolrests which are supported on both sides of the wheels, providing excellent support for the workpiece.

Features

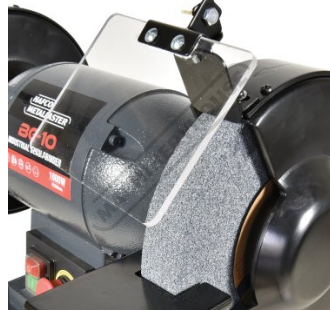
- High quality robust construction, manufactured in Taiwan
- 1.3HP high powered motor rated at it's true output power
- Fully balanced motor providing smooth operation
- Non Voltage Return (NVR) safety switch, which stops machine from re-starting during workshop power failures
- Emergency stop switch
- Capacitor start and run provides instant startup and running power
- Overload protection
- Heavy duty tool rests with dust chutes
- Adjustable spark protection eye shields
- 1" x 8TPI spindle
- Ø250 x 38 x 25mm wheels (36-grit & 60-grit)

Product Brochure For G162

Specific Features



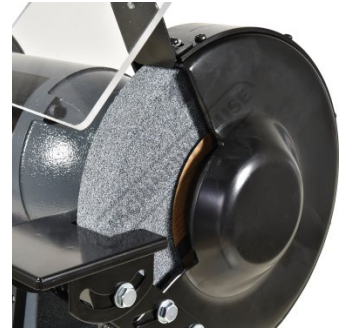
Tool Rest Dust Chute



Eye Shield



Fine Grinding Wheel



Course Grinding Wheel



Switch

Recommended Accessories

G182
Bench Grinder Stand



L090
Multitool Belt & Disc Linishing Attachment



L083
Multitool Chisel Sharpening Jig



L086
Multitool Tilting Table & Mitre Guide



Product Brochure For G162

G189
0.5CT Grinding Wheel Dresser -
Industrial Diamond Type



G188A
Grinder Wire Wheel - Crimped



G189A
Grinding Wheel Dresser - Rotary
Cutter Type



G174
Buffing Mop



G175
Buffing Mop

